

DN		ISO 5211	ØA	M	L	H	m [kg]
15	1/2"	F04	95	85	115	170	2,20
20	3/4"	F04/F05	105	85	120	170	3,05
25	1"	F04/F05	116	95	125	170	3,75
32	1 1/4"	F05/F07	140	106	130	170	5,75
40	1 1/2"	F05/F07	150	110	140	200	7,00
50	2"	F05/F07	165	118	150	200	9,50
65	2 1/2"	F07/F10	185	170	170	240	14,75
80	3"	F07/F10	200	170	180	240	18,85
100	4"	F07/F10	220	170	190	240	26,25
125	5"	F10/F12	250	200	325	450	43,65
150	6"	F10/F12	285	250	350	550	60,85
200	8"	F12	340	300	400	550	106,70




All dimensions in mm / change without subject to notice

Flange Ball Valve 528-AT, Stainless-Steel (2-Piece)

with manual or electric operation



- flange ball valve in 2-piece design
- blow-out proof stem
- material housing: 1.4408
- material ball: 1.4401
- maximal operating pressure: 40kg/cm² (DN15-50), 16kg/cm² (DN65-200)
- sealing: PTFE + 15% graphite
- medium temperature: -30°C up to +180°C
- length: DIN 3202 F4 /F5
- flange ends: DIN 2501 PN 40 (DN15-50), PN16 (DN65-200)


with mounted electric actuator of series	NK	NL	N 6S/N8S
			
floating time	15, 30 or 60s/90°	15, 30, 60 or 90s/90°	30, 50, 70, 80s/90°
torque	15Nm	20 up to 100Nm	180 up to 500Nm
ambient temperature	-15° up to +60°C	-15° up to +60°C	-15° up to +60°C
protection class	IP65	IP65	IP54
voltage	230V, 50Hz	230V, 50Hz	230V, 50Hz
power transmission	shaft coupling with ISO-square	ISO-square	ISO-square
Options such as potentiometers, additional auxiliary limit switches, position indication, control output 4-20 mA, Ex Zone 2/22 and higher protection classes up to IP67 on request.			

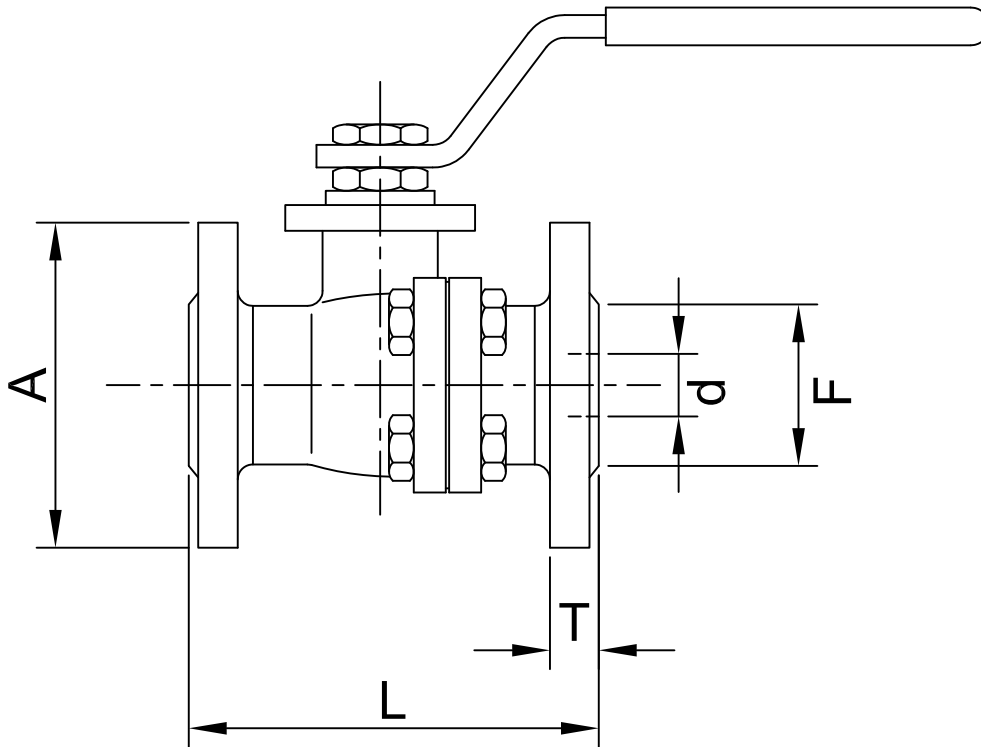
Flange Ball Valve 528-AT, Stainless-Steel (2-Piece)

with pneumatic operation



	<ul style="list-style-type: none"> ▪ flange ball valve in 2-piece design ▪ blow-out proof stem ▪ material housing: 1.4408 ▪ material ball: 1.4401 ▪ maximal operating pressure: 40kg/cm² (DN15-50), 16kg/cm² (DN65-200) ▪ sealing: PTFE + 15% graphite ▪ medium temperature: -30°C up to +180°C ▪ length: DIN 3202 F4 /F5 ▪ flange ends: DIN 2501 PN 40 (DN15-50), PN16 (DN65-200)
--	---

<p>with mounted pneumatic actuator of series</p>	<p>PD/PE</p> 
<p>material</p>	<p>aluminium, anodized / epoxy resin coated</p>
<p>control medium</p>	<p>filtered air</p>
<p>ambient temperature</p>	<p>-20° up to +80°C</p>
<p>actuating pressure</p>	<p>2 up to 8bar</p>
<p>mechanical interfaces</p>	<p>ISO 5211 / NAMUR VDI/VDE 3845 exterior travel limitation +/-10°</p>
<p>Options such as switch box, magnetic valve, positioner etc. on demand.</p>	







DN		Ød	L	ØA	ØF	T	m[kg]
15	1/2"	15	115	95	45	14	2,30
20	3/4"	20	120	105	58	16	2,95
25	1"	25	125	115	68	16	3,70
32	1 1/4"	32	130	140	78	18	5,50
40	1 1/2"	40	140	150	88	18	7,70
50	2"	50	150	165	102	20	10,90
65	2 1/2"	65	170	185	122	20	15,40
80	3"	80	180	200	138	22	19,45
100	4"	100	190	220	158	24	26,35
125	5"	125	325	250	188	26	46,30
150	6"	150	350	285	212	26	64,45
200	8"	200	400	340	268	30	89,85

All dimensions in mm / change without subject to notice

Flange Ball Valve 525, GG25 (2-Piece)

with manual or electric operation



	<ul style="list-style-type: none"> ▪ flange ball valve in 2-piece design ▪ blow-out proof stem ▪ material housing: GG25 ▪ material ball: 1.4301 ▪ maximal operating pressure: 16kg/cm² ▪ sealing: PTFE + 15% graphite ▪ medium temperature: -30°C up to +180°C ▪ length: DIN 3202 F4 /F5 ▪ flange ends: DIN 2501 PN 16 		
<p>with mounted electric actuator of series</p>	<p>NK</p> 	<p>NL</p> 	<p>N 6S/N8S</p> 
<p>floating time</p>	<p>15, 30 or 60s/90°</p>	<p>15, 30, 60 or 90s/90°</p>	<p>30, 50, 70, 80s/90°</p>
<p>torque</p>	<p>15Nm</p>	<p>20 up to 100Nm</p>	<p>180 up to 500Nm</p>
<p>ambient temperature</p>	<p>-15° up to +60°C</p>	<p>-15° up to +60°C</p>	<p>-15° up to +60°C</p>
<p>protection class</p>	<p>IP65</p>	<p>IP65</p>	<p>IP54</p>
<p>voltage</p>	<p>230V, 50Hz</p>	<p>230V, 50Hz</p>	<p>230V, 50Hz</p>
<p>power transmission</p>	<p>shaft coupling with ISO-square</p>	<p>ISO-square</p>	<p>ISO-square</p>
<p>Options such as potentiometers, additional auxiliary limit switches, position indication, control output 4-20 mA, Ex Zone 2/22 and higher protection classes up to IP67 on request.</p>			

Flange Ball Valve 525, GG25 (2-Piece)

with pneumatic operation



	<ul style="list-style-type: none"> ▪ flange ball valve in 2-piece design ▪ blow-out proof stem ▪ material housing: GG25 ▪ material ball: 1.4301 ▪ maximal operating pressure: 16kg/cm² ▪ sealing: PTFE + 15% graphite ▪ medium temperature: -30°C up to +180°C ▪ length: DIN 3202 F4 /F5 ▪ flange ends: DIN 2501 PN 16
<p>with mounted pneumatic actuator of series</p>	<p>PD/PE</p> 
<p>material</p>	<p>aluminium, anodized / epoxy resin coated</p>
<p>control medium</p>	<p>filtered air</p>
<p>ambient temperature</p>	<p>-20° up to +80°C</p>
<p>actuating pressure</p>	<p>2 up to 8bar</p>
<p>mechanical interfaces</p>	<p>ISO 5211 / NAMUR VDI/VDE 3845</p>
<p>exterior travel limitation +/-10°</p>	
<p>Options such as switch box, magnetic valve, positioner etc. on demand.</p>	