




DN	C	L1	L2	V1	V2	H	D	m [kg]
15	G 1/2	85	9	43	25	10	M8x1	0,55
20	G 3/4	95	11	48	25	10	M8x1	0,65
25	G 1	105	12	53	25	10	M8x1	0,80
32	G 1 1/4	120	14	66	35	16	M8x1	1,40
40	G 1 1/2	130	16	70	35	16	M8x1	2,00
50	G2	150	18	80	42	16	M8x1	2,95

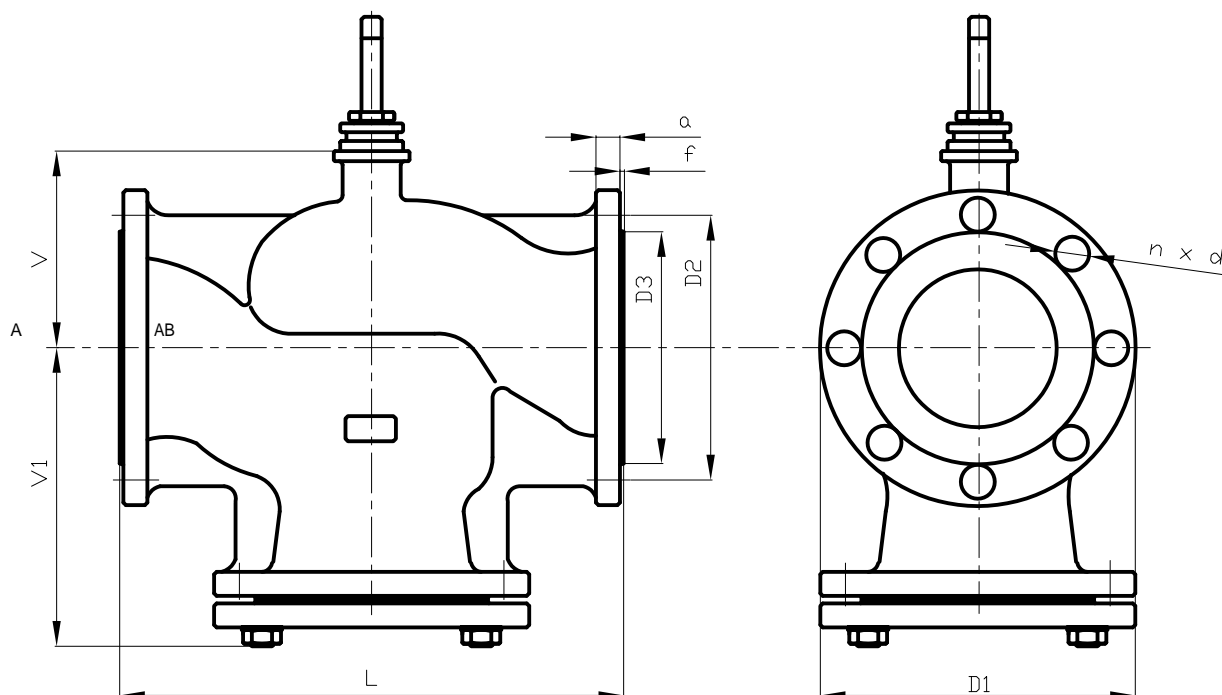
All dimensions in mm / change without subject to notice

2-Way Valve RV 102-2 and 3-Way Valve RV 102-3 for Neutral Liquids, Gases and Vapour Excepting Abrasive Admixtures such as Water and Low-Pressure Steam with electric operation



RV 102-2		<ul style="list-style-type: none"> ▪ nominal pressure: PN16 ▪ connection: lug with interior thread according to EN ISO 228-1 (9/2003) ▪ length: series M4 according to DIN 3202 (4/1982) 																						
RV 102-3		<table border="1" style="width: 100%; border-collapse: collapse;"> <thead> <tr> <th colspan="2" style="text-align: center;">RV 102-2 / RV 102-3</th> </tr> </thead> <tbody> <tr> <td>material housing</td> <td>bronze 42 3135</td> </tr> <tr> <td>material cone</td> <td>brass 42 3234</td> </tr> <tr> <td>working temperature</td> <td>0° up to +150°C</td> </tr> <tr> <td>cone type</td> <td>cylindric with cut-outs</td> </tr> <tr> <td>flow characteristics</td> <td>with equal percentage</td> </tr> <tr> <td>kvs-values</td> <td>0,6 up to 40m³/h</td> </tr> <tr> <td>leak rate</td> <td>class III. according to EN 1349 (<0,1% Kvs) in branch A-AB</td> </tr> <tr> <td>control ratio r</td> <td>50:1</td> </tr> <tr> <td>packing box sealing</td> <td>O-ring EPDM</td> </tr> <tr> <td>sealing seat</td> <td>EPDM</td> </tr> </tbody> </table>	RV 102-2 / RV 102-3		material housing	bronze 42 3135	material cone	brass 42 3234	working temperature	0° up to +150°C	cone type	cylindric with cut-outs	flow characteristics	with equal percentage	kvs-values	0,6 up to 40m ³ /h	leak rate	class III. according to EN 1349 (<0,1% Kvs) in branch A-AB	control ratio r	50:1	packing box sealing	O-ring EPDM	sealing seat	EPDM
RV 102-2 / RV 102-3																								
material housing	bronze 42 3135																							
material cone	brass 42 3234																							
working temperature	0° up to +150°C																							
cone type	cylindric with cut-outs																							
flow characteristics	with equal percentage																							
kvs-values	0,6 up to 40m ³ /h																							
leak rate	class III. according to EN 1349 (<0,1% Kvs) in branch A-AB																							
control ratio r	50:1																							
packing box sealing	O-ring EPDM																							
sealing seat	EPDM																							

with mounted electric actuator of series	VK	
stroke	20mm	
actuating force	1.000N	
ambient temperature	-15° up to +60°C	
protection class	IP54	
voltage	230V, 50(60)Hz power cut-off	
Options such as potentiometers, additional auxiliary limit switches, position indication, Ex Zone 2/22 and higher protection classes up to IP65 on request.		





Please note: drawing is not true to scale



DN	D1	D2	D3	nxd	a	f	L	V1	V	m[kg]	Type
15	95	65	45	4x14	16	2	130	65	25	3,2	103
20	105	75	58	4x14	18	2	150	75	25	4,3	103
25	115	85	68	4x14	18	2	160	80	25	5,5	103
32	140	100	78	4x18	18	2	180	90	35	7,7	103
40	150	110	88	4x18	18	3	200	100	35	8,5	103
50	165	125	102	4x18	20	3	230	115	42	11,9	103
65	185	145	118	8x19	20	3	290	185	96	23	113
80	200	160	132	8x19	22	3	310	193	116	30	113
100	220	180	156	8x19	24	3	350	216	131	41	113
125	250	210	184	8x19	26	3	400	239	156	59	113
150	285	240	211	8x19	26	3	480	284	181	81	113

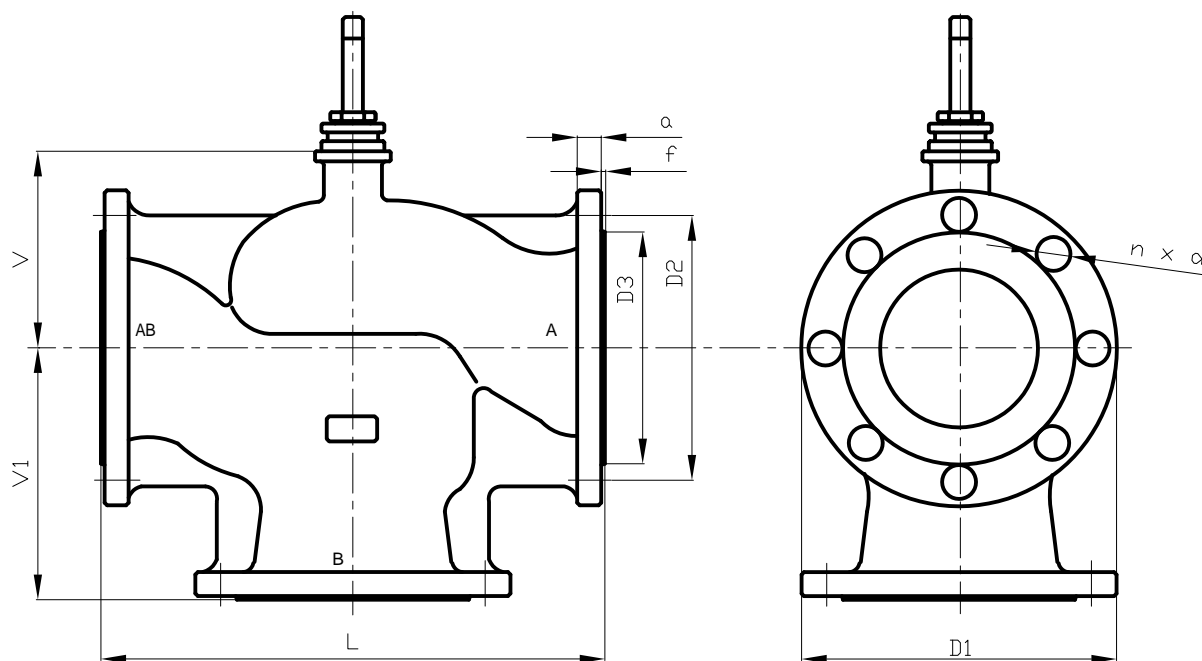
All dimensions in mm / change without subject to notice

2-Way Valve RV 103-2 and RV 113-2 for Neutral Liquids, Gases and Vapour
with electric operation



 RV 103-2  RV 113-2	<ul style="list-style-type: none"> ▪ pressure rating: PN16 ▪ connection: flange type B1 (rough sealing strip) according to EN 1092-2 ▪ length: series 1 according to EN 558-1 																																			
	<table border="1"> <thead> <tr> <th></th> <th>RV 103-2</th> <th>RV 113-2</th> </tr> </thead> <tbody> <tr> <td>material housing</td> <td colspan="2">grey cast iron EN-JL 1040</td> </tr> <tr> <td>material core</td> <td>brass 42 3234</td> <td>stainless steel 1.4027</td> </tr> <tr> <td>material spindle</td> <td colspan="2">stainless steel 1.4305</td> </tr> <tr> <td>working temperature</td> <td>0° up to +150°C</td> <td>+2° up to +150°C</td> </tr> <tr> <td>core type</td> <td>cylindric with cut-outs</td> <td>cylindric with cut-outs and soft sealing seat</td> </tr> <tr> <td>flow characteristics</td> <td colspan="2">equal percentage</td> </tr> <tr> <td>Kvs-values</td> <td>0,6 - 40m³/h</td> <td>40 - 360m³/h</td> </tr> <tr> <td>leak rate</td> <td>class III. acc. to EN 1349 (<0,1% Kvs) in branch A-AB</td> <td>class IV. – S1 according to EN 1349 (<0,0005% Kvs)</td> </tr> <tr> <td>control ratio r</td> <td colspan="2">50:1</td> </tr> <tr> <td>packing box sealing</td> <td>O-ring EPDM</td> <td>EPDM</td> </tr> <tr> <td>sealing seat</td> <td colspan="2">EPDM</td> </tr> </tbody> </table>		RV 103-2	RV 113-2	material housing	grey cast iron EN-JL 1040		material core	brass 42 3234	stainless steel 1.4027	material spindle	stainless steel 1.4305		working temperature	0° up to +150°C	+2° up to +150°C	core type	cylindric with cut-outs	cylindric with cut-outs and soft sealing seat	flow characteristics	equal percentage		Kvs-values	0,6 - 40m³/h	40 - 360m³/h	leak rate	class III. acc. to EN 1349 (<0,1% Kvs) in branch A-AB	class IV. – S1 according to EN 1349 (<0,0005% Kvs)	control ratio r	50:1		packing box sealing	O-ring EPDM	EPDM	sealing seat	EPDM
	RV 103-2	RV 113-2																																		
material housing	grey cast iron EN-JL 1040																																			
material core	brass 42 3234	stainless steel 1.4027																																		
material spindle	stainless steel 1.4305																																			
working temperature	0° up to +150°C	+2° up to +150°C																																		
core type	cylindric with cut-outs	cylindric with cut-outs and soft sealing seat																																		
flow characteristics	equal percentage																																			
Kvs-values	0,6 - 40m³/h	40 - 360m³/h																																		
leak rate	class III. acc. to EN 1349 (<0,1% Kvs) in branch A-AB	class IV. – S1 according to EN 1349 (<0,0005% Kvs)																																		
control ratio r	50:1																																			
packing box sealing	O-ring EPDM	EPDM																																		
sealing seat	EPDM																																			

with mounted electric actuator of series	VK	V2
		
stroke	20mm	85mm
actuating force	1.000N	2.000N
ambient temperature	-15° up to +60°C	-15° up to +60°C
protection class	IP54	IP54
voltage	230V, 50(60)Hz	230V, 50(60)Hz
power cut-off		
Options such as potentiometers, additional auxiliary limit switches, position indication, Ex Zone 2/22 and higher protection classes up to IP65 on request.		



Please note: drawing is not true to scale



DN	D1	D2	D3	n x d	a	f	L	V1	V	m/kg
15	95	65	45	4 x 14	16	2	130	65	25	3,2
20	105	75	58	4 x 14	18	2	150	75	25	4,3
25	115	85	68	4 x 14	18	2	160	80	25	5,5
32	140	100	78	4 x 18	18	2	180	90	35	7,7
40	150	110	88	4 x 18	18	3	200	100	35	8,5
50	165	125	102	4 x 18	20	3	230	115	42	11,9
65	185	145	118	4 x 19	20	3	290	145	96	18,3
80	200	160	132	8 x 19	22	3	310	155	116	24,1
100	220	180	156	8 x 19	24	3	350	175	131	33,8
125	250	210	184	8 x 19	26	3	400	200	156	49,3
150	285	240	211	8 x 23	26	3	480	240	181	69,3




All dimensions in mm / change without subject to notice

3-Way Valve RV 103-3 and RV 113-3 for Neutral Liquids, Gases and Vapour

with electric operation



 RV 103-3  RV 113-3	<ul style="list-style-type: none"> ▪ pressure rating: PN16 ▪ connection: flange type B1 (rough sealing strip) according to EN 1092-2 ▪ length: series 1 according to EN 558-1 																																			
	<table border="1"> <thead> <tr> <th></th> <th>RV 103-3</th> <th>RV 113-3</th> </tr> </thead> <tbody> <tr> <td>material housing</td> <td colspan="2">grey cast iron EN-JL 1040</td> </tr> <tr> <td>material core</td> <td>brass 42 3234</td> <td>stainless steel 1.4027</td> </tr> <tr> <td>material spindle</td> <td colspan="2">stainless steel 1.4305</td> </tr> <tr> <td>working temperature</td> <td>0° up to +150°C</td> <td>+2° up to +150°C</td> </tr> <tr> <td>core type</td> <td>cylindric with cut-outs</td> <td>cylindric with cut-outs and soft sealing seat</td> </tr> <tr> <td>flow characteristics</td> <td colspan="2">equal percentage in pass, linear in branch</td> </tr> <tr> <td>kvs-values</td> <td>0,6 - 40m³/h</td> <td>40 - 360m³/h</td> </tr> <tr> <td>leak rate</td> <td>class III. acc. to EN 1349 (<0,1% kvs) in branch A-AB</td> <td>class IV. – S1 according to EN 1349 (<0,0005% Kvs)</td> </tr> <tr> <td>control ratio r</td> <td colspan="2">50:1</td> </tr> <tr> <td>packing box sealing</td> <td colspan="2">EPDM</td> </tr> <tr> <td>sealing seat</td> <td colspan="2">EPDM</td> </tr> </tbody> </table>		RV 103-3	RV 113-3	material housing	grey cast iron EN-JL 1040		material core	brass 42 3234	stainless steel 1.4027	material spindle	stainless steel 1.4305		working temperature	0° up to +150°C	+2° up to +150°C	core type	cylindric with cut-outs	cylindric with cut-outs and soft sealing seat	flow characteristics	equal percentage in pass, linear in branch		kvs-values	0,6 - 40m ³ /h	40 - 360m ³ /h	leak rate	class III. acc. to EN 1349 (<0,1% kvs) in branch A-AB	class IV. – S1 according to EN 1349 (<0,0005% Kvs)	control ratio r	50:1		packing box sealing	EPDM		sealing seat	EPDM
	RV 103-3	RV 113-3																																		
material housing	grey cast iron EN-JL 1040																																			
material core	brass 42 3234	stainless steel 1.4027																																		
material spindle	stainless steel 1.4305																																			
working temperature	0° up to +150°C	+2° up to +150°C																																		
core type	cylindric with cut-outs	cylindric with cut-outs and soft sealing seat																																		
flow characteristics	equal percentage in pass, linear in branch																																			
kvs-values	0,6 - 40m ³ /h	40 - 360m ³ /h																																		
leak rate	class III. acc. to EN 1349 (<0,1% kvs) in branch A-AB	class IV. – S1 according to EN 1349 (<0,0005% Kvs)																																		
control ratio r	50:1																																			
packing box sealing	EPDM																																			
sealing seat	EPDM																																			

with mounted electric actuator of series	VK	V2 – V4	V10
			
stroke	20mm	85mm	100mm
actuating force	1.000N	2.000N - 4.000N	10.000N
ambient temperature	-15° up to +60°C	-15° up to +60°C	-15° up to +60°C
protection class	IP54	IP54	IP54
voltage	230V, 50(60)Hz	230V, 50(60)Hz	230V, 50(60)Hz
	power cut-off		
Options such as potentiometers, additional auxiliary limit switches, position indication, Ex Zone 2/22 and higher protection classes up to IP65 on request.			