

Gear disengagement/Emergency manual override

Rotary and turn actuators of type CL can be supplied with a gear disengagement and/or a manual override via hand wheel.

The manual override is supplied with an automatic gear disengagement to avoid rotation of the hand wheel on electrical operation of the actuator.

Before using the manual override, the gear disengagement must be set to „HAND“. The force flow between the motor and the output shaft is interrupted and therefore the self-holding torque on the output shaft is ineffective. The „HAND“ mode should only be activated when the actuator is free from load.

The manual override works with the hand wheel. Push the hand wheel in until the bevel gear is engaged and turn the hand wheel in the desired direction.

After reaching the desired position, release the hand wheel and it will automatically set back to its resting position.

Set the gear disengagement back to „AUTO“ after using the hand wheel. The force flow between the motor and the output shaft is established again and the actuator stays in the set position through its holding torque.

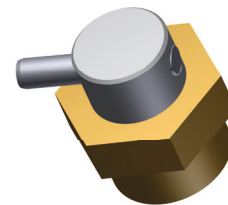
Position indicator

The actuators of type CL are optionally supplied with a position indicator.

It is placed on the actuator's cover.

On actuators CL-S and CL-M the position indicator shows (on a 320° operating travel) the 1:1 position of the output shaft. Beyond that (CL-L and CL-H) a reduction occurs.

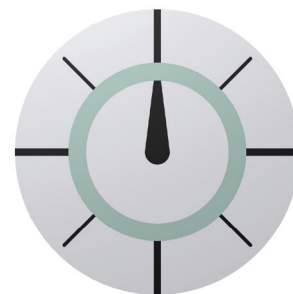
Gear disengagement



Hand wheel



Position indicator



Classic Line

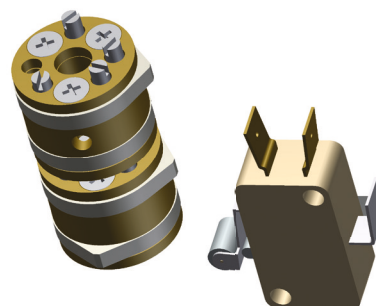
OPTIONS

Micro switches

Switches with silver contacts, breaking capacity 10 (3) A. 250V AC each 1 opener and 1 closer, plug connections: 6.3 x 0.8 mm.

Option

Switches with gold contacts, breaking capacity 0.1 (0.05) A, 250V AC.



Adjustment cams JNO

Stepless adjustable double (2x) or quadruple (4x) cams. Switching cams with standard angle 15°.

Option

Switching cams with special angles 180° and 355°.



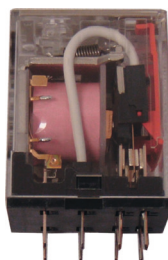
Potentiometer

A voltage potential is picked up by a flexible wiper on a resistor element. Under the principle of a voltage divider the potentiometer can be used as a set point transmitter and position indicator. The acceptable voltage depends on the dimension of the total resistance.

	RP19	RP20	MP21
Technology	Wire	Wire	Conductive plastic
Electrical rotation angle	320°	355°	320°
Mechanical rotation angle	320° w/ stop	360° w/o stop	320° w/o stop
Resistance range (Ohm)	100...20k	100...20k	1k...50k
Resistance tolerance	± 3%	± 3%	± 15%
Linearity tolerance	± 0.5%	± 0.5%	± 1%
Capacitance (W)	1.5	1.5	0.8
Durability in million axis movements	1	1	10
Acceptable ambient temperature	-40 °C...+105 °C		

Relais for parallel operation

The rotary and turn actuators of type CL and the lift drives CL-H can be supplied with a relay for parallel operation of several actuators via one switching contact.



Relay specifications

- Coil voltage: 220 - 240V AC
- Coil capacity: 1.1VA
- Coil resistance: 18.78 kΩ
- Switching voltage max.: 250V AC
- Switching current max.: 10A
- Switching capacity max.: 2500VA
- Contact layout: Double-pole contact
- Isolation between coil and contact: 2kV
- Operating temperature: max. +70 °C
- Other coil voltages available: 24V AC and 115V AC

